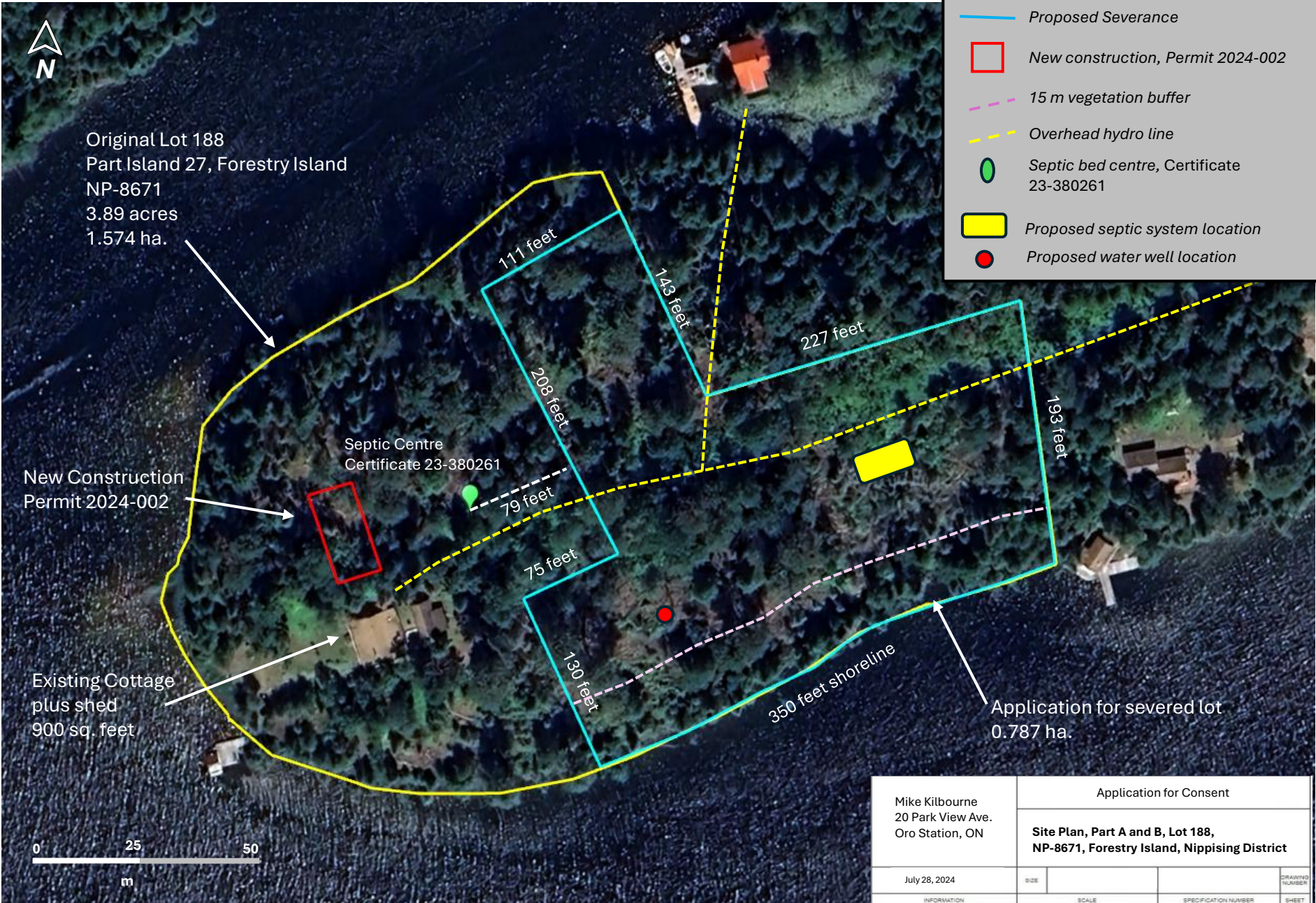


Sketch for severing Lot 188, NP-8671 into 2 equal lots of 0.787 ha and proposed septic/well locations.



Mike Kilbourne 20 Park View Ave. Oro Station, ON	Application for Consent			
	Site Plan, Part A and B, Lot 188, NP-8671, Forestry Island, Nipissing District			
July 28, 2024	SIZE			DRAWING NUMBER
INFORMATION	SCALE		SPECIFICATION NUMBER	SHEET

Building envelope for severed lot in previous slide with setback from hydro-line of 5 m and 15m from the waterline. The envelope allows for possible building sites considering a 15m deep by 20m long building 'footprint' with a 5m deep sun-deck. The same building envelope footprint of 15m deep by 20m long with a 4m wide sundeck and waterline set-backs of 15m were approved for building permit 2024-002 within Lot 188, NP-8671 original configuration.

Legend

Proposed building envelope

Proposed Severed Lot

5m hydro line buffer

15 m vegetation buffer

Overhead hydro line

An aerial photograph of a wooded area with a proposed building envelope highlighted in orange. The envelope is situated within a larger cyan-outlined area representing a severed lot. A red line indicates a 5m hydro line buffer, and a yellow line indicates a 15m vegetation buffer. A white line shows the overhead hydro line. The map includes a north arrow in the top left, a scale bar (0 to 40 meters) in the bottom right, and a Google Earth interface at the bottom. Lot numbers 188 and 174 are visible on the map. The image is credited to Airbus and dated 7/30/2022.