

**THE CORPORATION OF THE  
MUNICIPALITY OF TEMAGAMI**

**BY-LAW NO. 07-694**

---

**Being a by-law to amend By-law No. 06-650, the Comprehensive Zoning By-law of the Municipality of Temagami.**

---

**WHEREAS** the Council of the Corporation of the Municipality of Temagami is empowered to pass by-laws to regulate the use of lands pursuant to Section 34 of the Planning Act, R.S.O. 1990, as amended;

**AND WHEREAS** the Council of the Corporation of the Municipality of Temagami deems it advisable to amend By-law No. 06-650 (the Comprehensive Zoning By-law of the Municipality of Temagami);

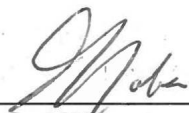
**NOW THEREFORE** the Council of the Corporation of the Municipality of Temagami enacts as follows:

**That the lands legally described as Loc. RW 201, Part 1 Plan 36R-10692, Strathy Twp., Municipality of Temagami, District of Nipissing and known locally as 114 Steven's Road is re-zoned from "Future Development" (FD) to "Rural Residential" (R3).**

1. Schedule "A" hereto is hereby made a part of this By-law as fully and to all intents and purposes as though recited in full herein.
2. This By-law shall become effective on the date hereof with:
  - (i) the expiration of the time period specified for the filing of objections by the notice of the passing of this By-law, provided that no notice of objection has been filed within the time period specified; or
  - (ii) the determination or direction of the Ontario Municipal Board where an objection to the approval of this By-law has been filed within the time period specified in the notice of the passing of this By-law.

**THIS BY-LAW** read a first time this 11<sup>th</sup> day of January , 2007

**THIS BY-LAW** read a second and third time and finally passed this 25<sup>th</sup> day of January, 2007.

  
\_\_\_\_\_  
**MAYOR**

  
\_\_\_\_\_  
**CAO/Clerk**

**-PARI LOCAPQN-RW-201**

**PART 1, 3SR-2006-----**

**TOWNSHIP OF STRATHY**

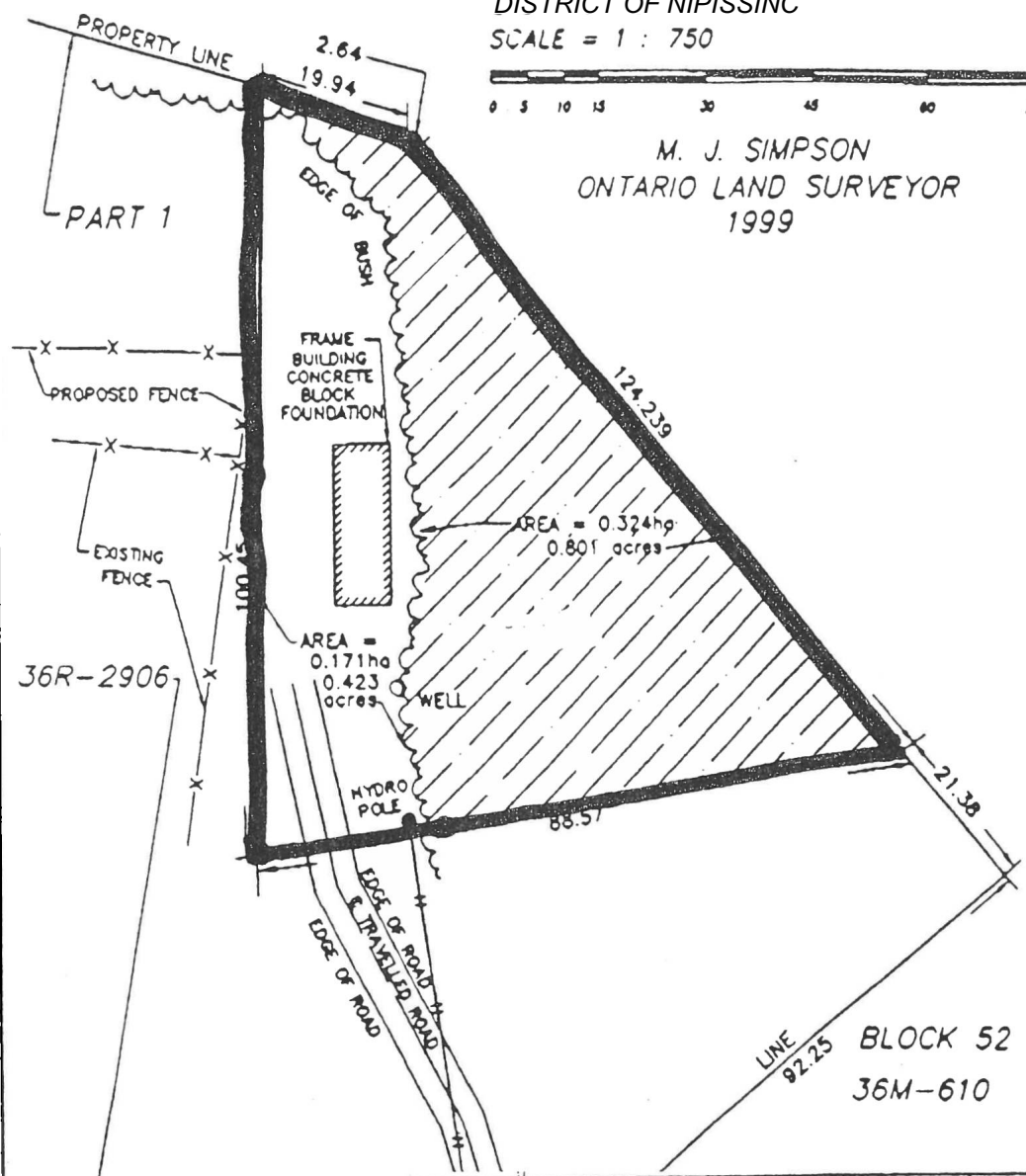
now in the  
**MUNICIPALITY OF THE TOWNSHIP TEMAGAMI!**

**DISTRICT OF NIPISSING**

**SCALE = 1 : 750**



**M. J. SIMPSON**  
**ONTARIO LAND SURVEYOR**  
**1999**



**TOTAL AREA** = 0.495ha (1.21 acres)  
**USEABLE AREA** = 0.171ha (0.423 acres)  
**UNUSEABLE AREA** = 0.324ha (0.801 acres)

