

# **THE CORPORATION OF THE MUNICIPALITY OF TEMAGAMI**

## **BY-LAW NO. 06-679**

---

### **Being a by-law to close and stop up a shore road allowance**

---

WHEREAS under Section 34 of the Municipal Act, 2001, S.O., 2001, c.25, as amended, a municipality has the capacity, rights, powers and privileges to pass by-laws to stop up and close streets and lanes within the Municipality of Temagami;

AND WHEREAS notice of its intention to pass this by-law was published for at least three (3) successive weeks in the Temiskaming Speaker;

AND WHEREAS the Council of the Corporation of the Municipality of Temagami has made provision for and has heard in person who claims that this land will be prejudicially affected by this by-law and has applied to be heard;

**NOW THEREFORE the Council of the Corporation of the Municipality of Temagami hereby enacts as follows:**

1. To close and stop up that Portion of the Shore Road Allowance adjacent to Mining Location WD 257 and WD 259 (as shown on Schedule "A") in the Municipality of Temagami, District of Nipissing.

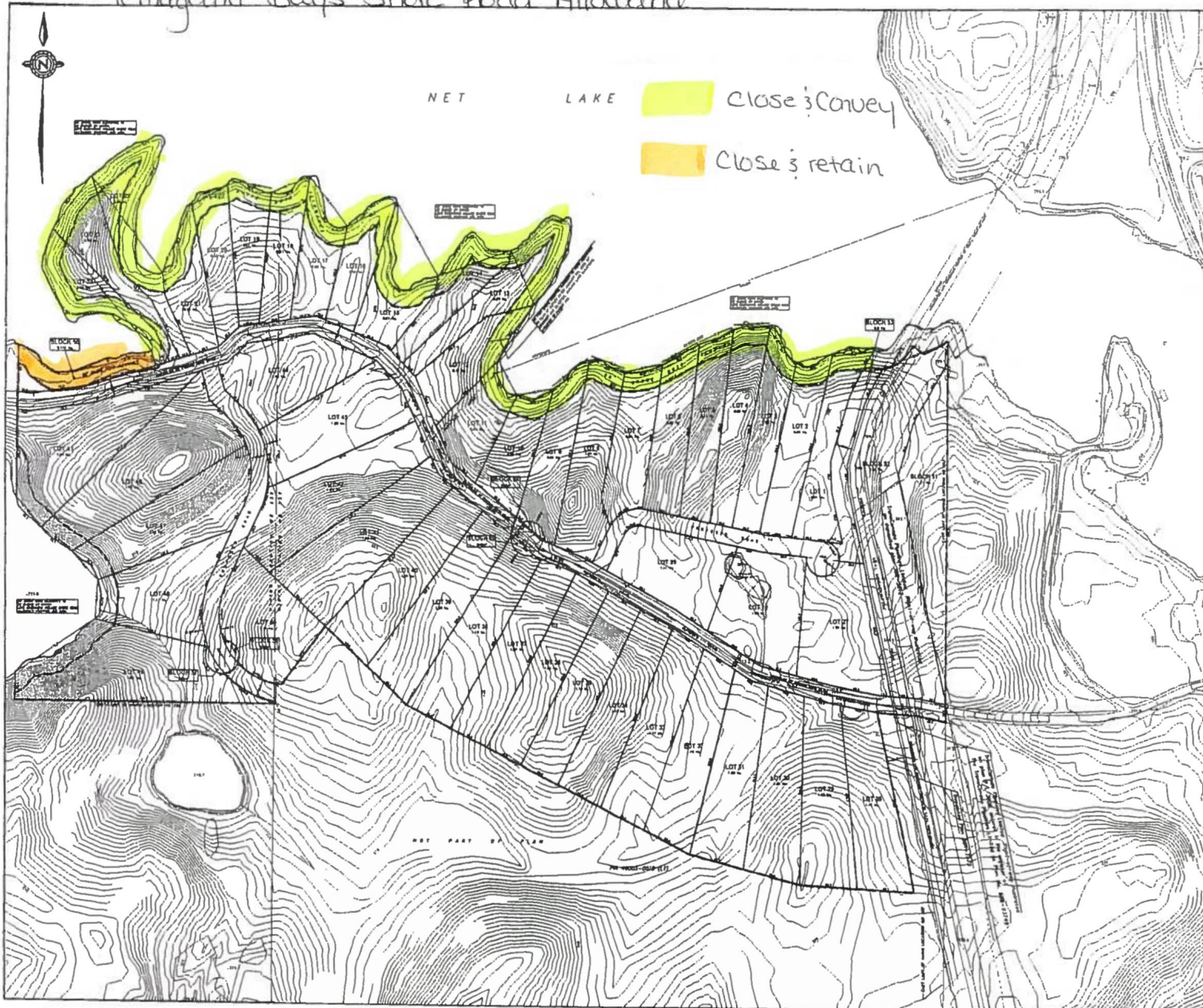
BE TAKEN AS READ A FIRST time on this 5<sup>th</sup> day of October, 2006.

READ A SECOND AND THIRD time and finally passed this 5<sup>th</sup> day of October, 2006.

  
**MAYOR**

  
CAO/Clerk

# Temagami Bays Shore Road Allowance



## TEMAGAMI BAYS ESTATES

### DRAFT PLAN OF SUBDIVISION

PART OF MINING LOCATION WD 254 AND  
PART OF MINING LOCATION WD 251  
GEOGRAPHIC TOWNSHIP OF STRATHY  
MUNICIPALITY OF TEMAGAMI  
DISTRICT OF MPPSSING

### OTHER INFORMATION

1. ADDITIONAL INFORMATION REQUIRED UNDER SECTION 11(1) OF THE PLANNING ACT
- A. LAND BOUNDARIES ARE AS SHOWN ON DRAFT PLAN
- B. ROADWAYS ARE AS SHOWN ON DRAFT PLAN AND KEY PLAN
- C. KEY PLAN IS AS SHOWN ON DRAFT PLAN
- D. PROPOSED LOTS ARE FOR RESIDENTIAL USE, AS SHOWN
- E. ASSUMED LOT DIMENSIONS ARE APPROXIMATE ONLY
- F. LOT DIMENSIONS ARE APPROXIMATE ONLY
- G. TOPOGRAPHICAL FEATURES ARE AS SHOWN, BASED ON MORTIMER & MORTIMER INC. TOPOGRAPHICAL 9-12-84 MAP
- H. WATER SUPPLY IS PRIVATE, INDIVIDUAL SYSTEMS
- I. SOIL IS ASSUMED TO BE NATIVE BULTY SAND OVER BEDROCK
- J. IN COMPLIANCE WITH THE DRAFT PLAN
- K. PRIVATE SEPTIC SYSTEMS TO BE AVAILABLE
- L. TRANS-CANADA PIPE LINE LIMITED 400 BELL CANADA EASEMENTS ARE LOCATED WITHIN BLOCK 21



KEY PLAN 1:25,000

### OWNER'S CERTIFICATE

TEMAGAMI BAYS DEVELOPMENT CORPORATION, BEING THE REGISTERED OWNERS OF THE SUBJECT LANDS, HEREBY SUBMITS A DRAFT PLAN OF SUBDIVISION FOR APPROVAL

DATE: \_\_\_\_\_  
PRESIDENT

### SURVEYOR'S CERTIFICATE

I HEREBY CERTIFY THAT THE BOUNDARIES OF THE LANDS TO BE SUBDIVIDED (SHOWN IN HEAVY BROKEN OUTLINE) AND THEIR RELATIONSHIP TO THE ADJACENT LANDS ARE ACCURATELY SHOWN ON THIS PLAN

7. JARVIS BLANCHARD, P.L.S.  
P.A. BLANCHARD LIMITED  
ONTARIO LAND SURVEYORS  
100 LAKE ST., NORTH BAY, ON P1B 6M3  
TEL: (705) 471-2400, FAX: (705) 475-1643

### PHASING PLAN

PHASE 1: LOTS 1 - 18 and 25 - 39, BLOCKS 1 - 11  
PHASE 2: LOTS 11 - 24 and 40 - 44, BLOCK 11  
PHASE 3: LOTS 45 - 50, BLOCKS 27 - 30

### REVISIONS

DATE: MARCH 3, 2004  
SCALE: 1:2000

**WAYNE SIMPSON AND ASSOCIATES**  
PLANNING AND DEVELOPMENT CONSULTANTS  
11 CENTRE STREET SOUTH, SUITE 101  
10012 VYRLE, ONTARIO, P1B 1W4  
TEL: (705) 726-8001, FAX: (705) 726-8001



GMPB 7 Page 87

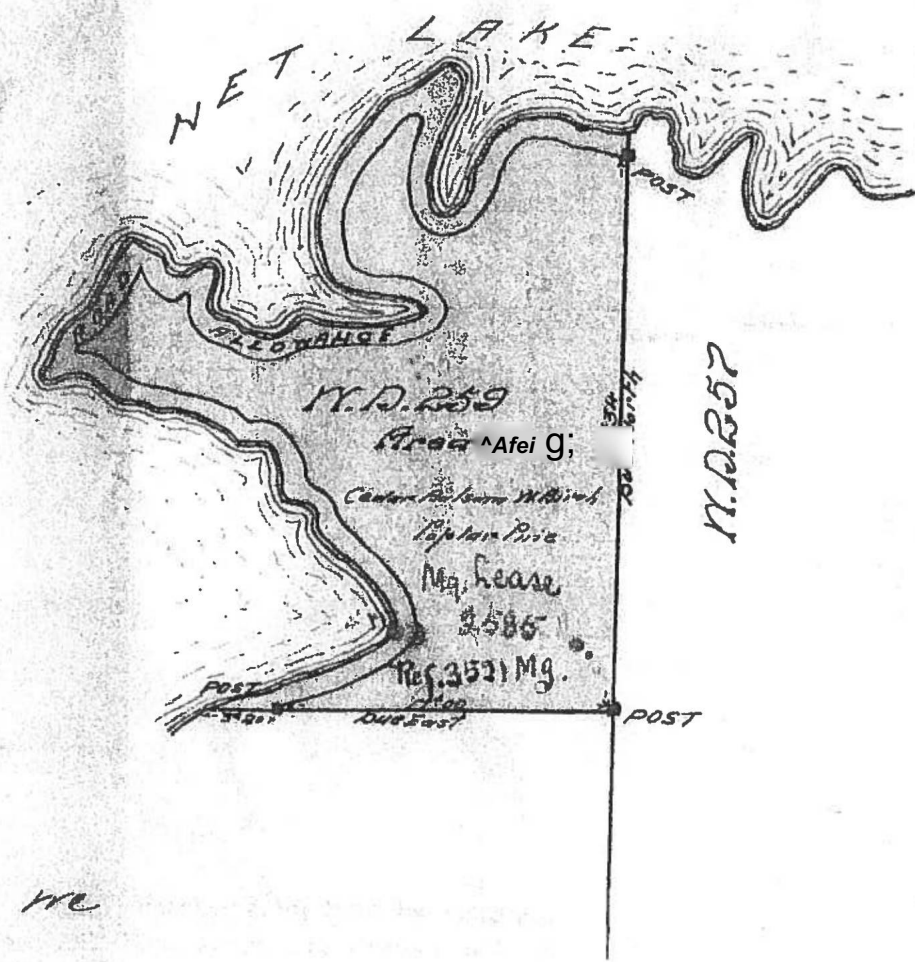
OFFICE FILE # 43680  
•Muxutiw

84472  
CATALOGUED

MICROFILMED

PLAN  
OF  
MINING LOC# N.D.N# 259

Dist. of Nipissing  
Scale 10 chs. to an inch



we

our

De Morant & Silvestre

Sudbury  
Jan 8<sup>th</sup> 1900

L. Lorrainors  
E. J. Feb 28 / 1900  
mkg

Land down

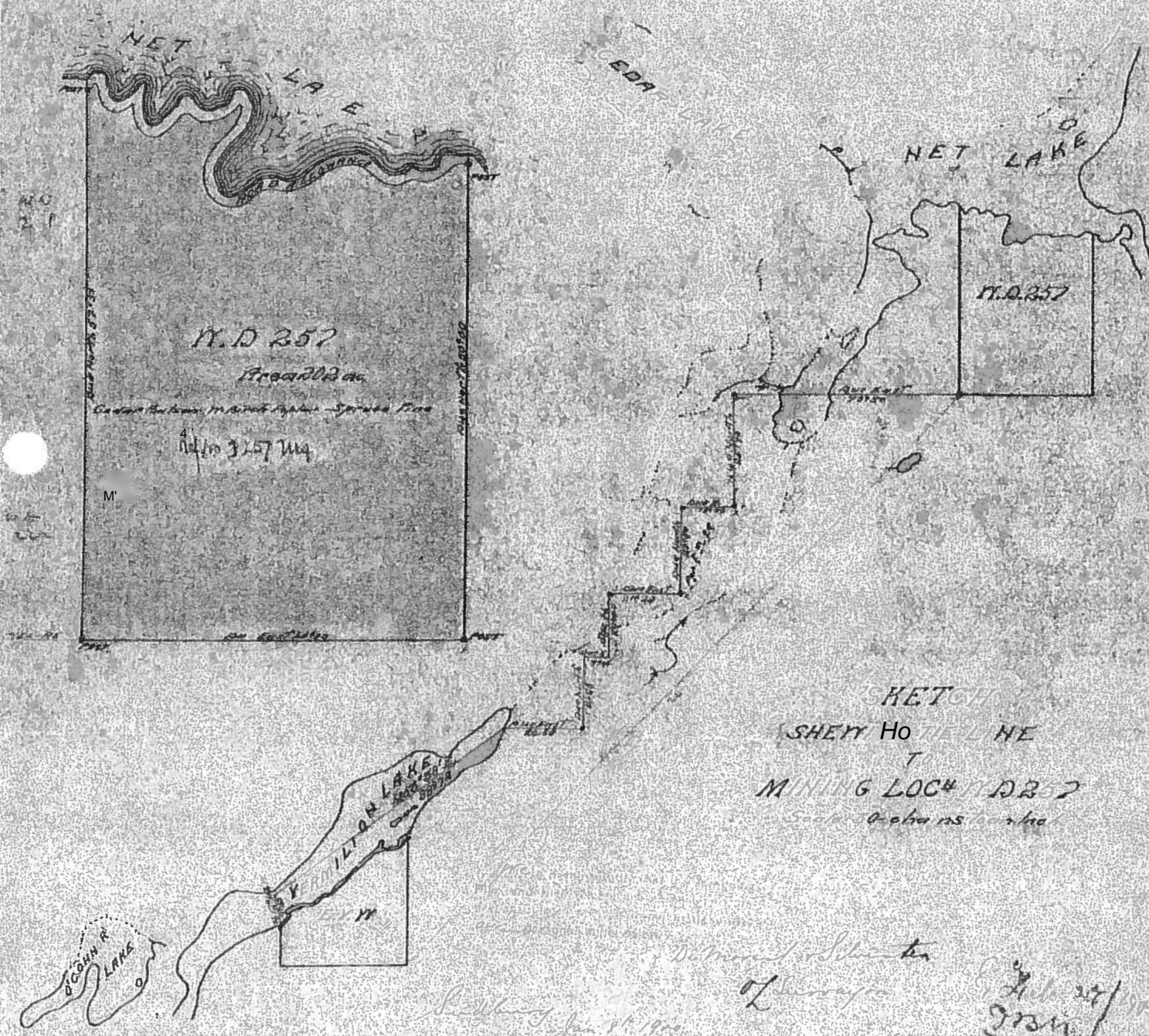
PLAN

or

MINING LOC# N.A. 257

Dist. of ^V/SS^

Sc^y^pAs./a cro/?



SKETCH

SHEPP HO LINE

TO

MINING LOC# N.D. 2

5-6-68 0-6-68 15-6-68

Deformed Silica

of

Feb 27/1971