

The Corporation of the Township of Temagami

By-law No. 94-352

Being a By-law to rezone Parts 1 to 58, Plan 36R-9753 within Location CL 8559, Plan 36R-9609 in the North Temagami Trailer Park and thereby amend By-law 81-62

Whereas the Council of the corporation of the Township of Temagami is empowered to pass By-laws to regulate the use of land pursuant to Section 34 of the Planning Act.

AND WHEREAS it is deemed appropriate to amend By-law 81-62 as amended, to change the Zone symbols on Parts 1 to 58, Plan 36R-9753 within Location CL 8559, Plan 36R-9609 in the North Temagami Trailer Park to legalize the location of existing buildings and structures on a lot.

NOW THEREFORE the Council of the Corporation of the Township of Temagami enacts as follows:

1. That Schedule "D" of Zoning By-law 81-62 is hereby amended by changing the Zone symbols on the lands indicated on Schedule "A" to this By-law.
2. That Section 6 of Zoning By-law 81-62 is hereby renumbered Section 7 and all subsections within the former Section 6 are renumbered accordingly.
3. That a new Section 6 be added to Zoning By-law 81-62 as follows:

"Section 6 - EXCEPTIONS

- 6.1 Notwithstanding any other provision in this By-law, on the lands denoted by the symbol * 1 on the Schedules to this By-law, the location of all buildings and structures are deemed to conform to the By-law on the day By-law 94-352 comes into effect in accordance with the Planning Act. This provision shall not apply to any new buildings and structures, including additions, constructed after By-law 94-352 comes into effect. Such buildings and structures shall comply with all other provisions of By-law 81-62.

This By-law shall come into force in accordance with the Planning act.

READ A FIRST AND SECOND TIME on this 4th day of August, 1994

READ A THIRD and final time and passed this 4th, day of August, 1994



Reeve

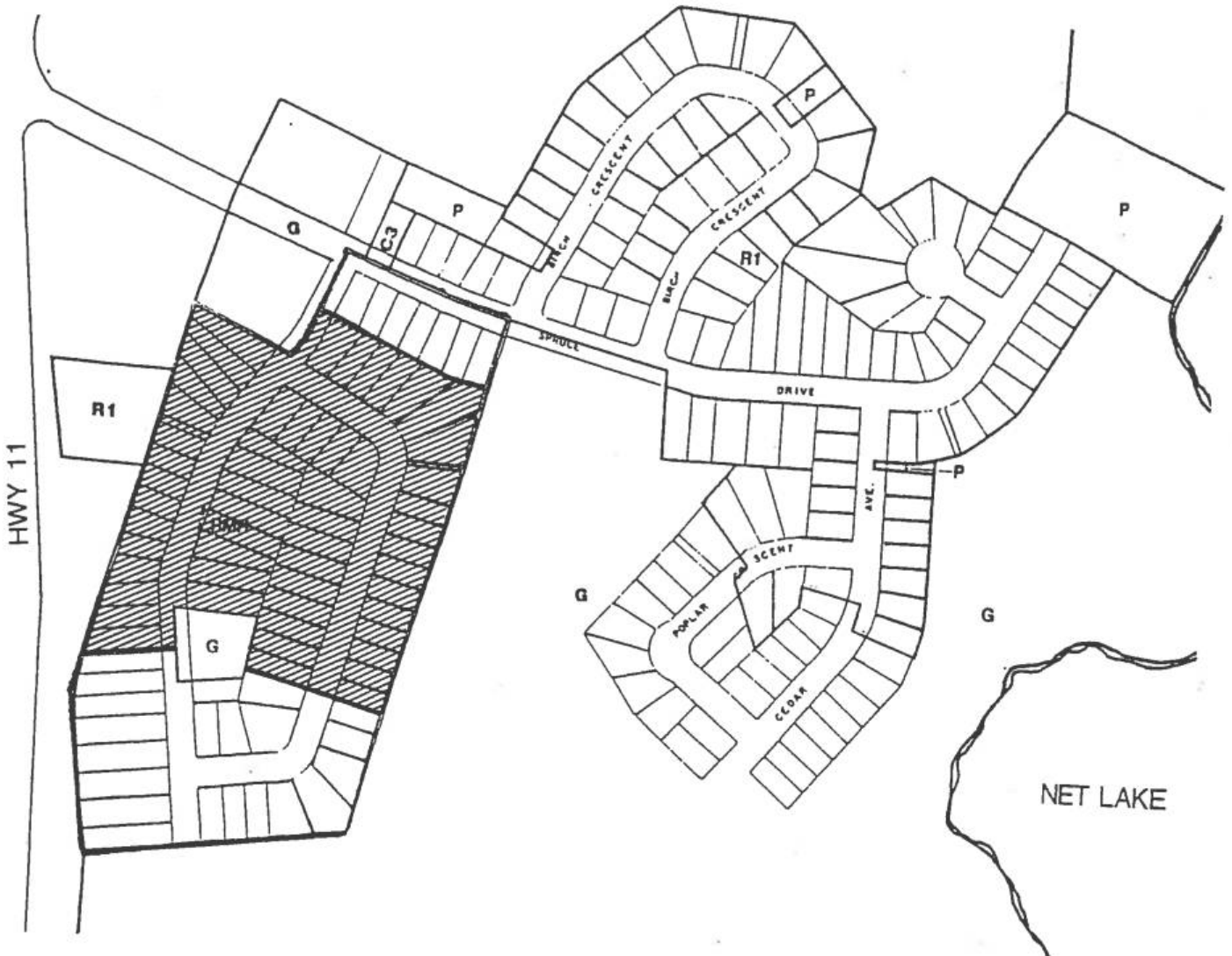


CAO

SCHEDULE 'A'

Township of Temagami

By-Law 94 - m



Legend



Area to be rezoned from the Residential Mobile Home (RMH) Zone to the Residential Mobile Home Exception One (RMH*1) Zone.

This is Schedule 'A' to

By-Law 4-3 a

Passed this V day

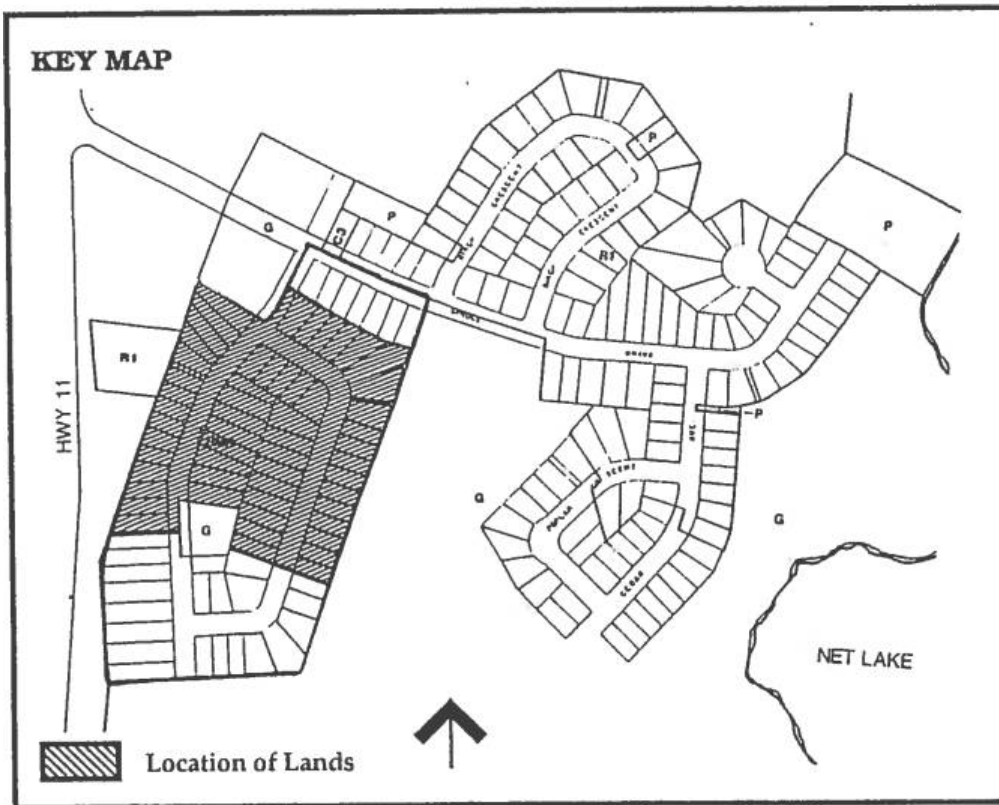
of August, 1994.

Clerk

Reeve

0 50 200m





RMH ZONING

	FRONT	SIDE 1	SIDE 2	REAR	ACCESSORY
	YARD(M)	YARD(M)	YARD(M)	YARD(M)	BUILDING
PART 1	5.4864	8.5344	1.8288	11.2776	
PART 2	0	0	0	0	
PART 3	6.858	5.4864	1.524	11.5824	SHED ENCR PART 3
PART 4	0	0	0	0	
PART 5	9.7536	4.8768	4.572	17.3736	
PART 6	6.096	7.62	2.5908	27.432	
PART 7	7.0104	4.8768	3.048	18.288	
PART 8	0	0	0	0	
PART 9	7.3152	9.144	1.524	12.192	
PART 10	7.3152	6.4008	1.8288	11.8872	
PART 11	7.62	9.144	0.9144	9.144	SHED AT REAR LINE
PART 12	6.096	5.4864	2.4384	12.8016	
PART 13	5.1816	7.0104	1.2192	8.8392	SHED OVER REAR LINE
PART 14	7.3152	4.572	2.1336	11.8872	
PART 15	7.0104	5.7912	0.3048	16.1544	
PART 16	0	0	0	0	
PART 17	0	0	0	0	
PART 18	5.4864	5.7912	1.2192	11.2776	
PART 19	4.572	5.4864	0	11.5824	
PART 20	0	0	0	0	
PART 21	5.1816	2.4384	6.096	24.0792	
PART 22	5.1816	4.8768	1.8288	20.7264	
PART 23	4.8768	1.524	6.096	23.1648	
PART 24	4.8768	1.8288	5.4864	26.5176	
PART 25	4.572	0.6096	5.7912	23.1648	SHED OVER SIDELINE
PART 26	6.7056	2.1336	8.5344	24.384	
PART 27	5.7912	1.2192	4.8768	28.956	
PART 28	7.0104	3.9624	0.6096	24.384	
PART 29	7.3152	3.048	9.144	21.336	
PART 30	8.2296	3.6576	4.8768	21.9456	
PART 31	8.5344	0.762	16.4592	5.7912	
PART 32	6.7056	1.8288	6.096	9.144	
PART 33	6.096	2.4384	7.0104	12.192	
PART 34	5.7912	3.5052	7.3152	15.24	
PART 35	0	0	0	0	
PART 36	0	0	0	0	
PART 37	0	0	0	0	
PART 38	0	0	0	0	
PART 39	7.0104	2.4384	4.572	26.3652	PATIO OVER SIDE LINE
PART 40	7.62	6.7056	0.4572	31.5468	SHED OVER SIDE LINE
PART 41	0	0	0	0	
PART 42	8.5344	6.096	2.7432	28.0416	
PART 43	4.572	1.524	6.7056	30.48	
PART 44	0	0	0	0	
PART 45	7.0104	2.7432	4.1148	32.6136	
PART 46	7.0104	4.8768	1.524	20.7264	
PART 47	6.096	1.524	5.6388	16.1544	SHED ON REAR LINE
PART 48	7.3152	5.1816	1.3716	15.24	
PART 49	7.62	0.762	10.9728	17.6784	
PART 50	8.2296	5.4864	3.5052	17.3736	SHED ON SIDE, OVER REAR
PART 51	7.9248	1.8288	6.7056	19.2024	
PART 52	6.096	5.4864	1.2192	16.4592	SHED ON PART 53
PART 53	0	0	0	0	
PART 54	0	0	0	0	
PART 55	8.2296	3.6576	2.7432	19.2024	
PART 56	10.668	3.9624	4.2672	32.6136	
PART 57	0	0	0	0	
PART 58	6.096	6.096	1.8288	39.0144	SHED ON SIDE LINE